

**Fitting Instructions:
Street Triple
Alarm/Immobiliser S4- A9808083**



Thank you for choosing this Triumph genuine accessory kit. This accessory kit is the product of Triumph's use of proven engineering, exhaustive testing, and continuous striving for superior reliability, safety and performance.

Completely read all of these instructions before commencing the installation of the accessory kit in order to become thoroughly familiar with the kit's features and the installation process.

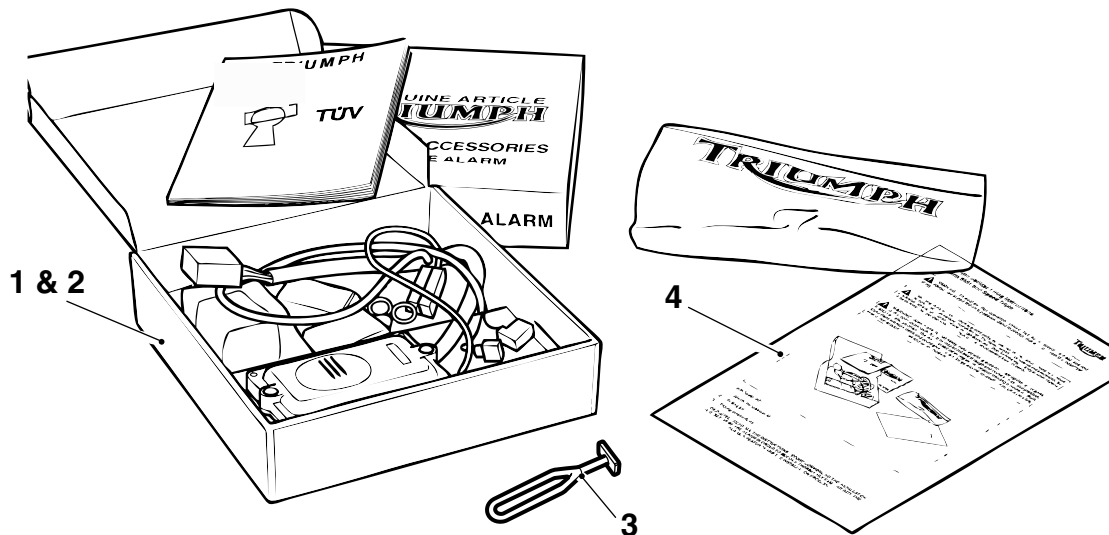
These instructions should be considered a permanent part of your accessory kit, and should remain with it even if your accessory equipped motorcycle is subsequently sold.

Warning

This accessory kit is designed for use on Triumph Street Triple motorcycles only and should not be fitted to any other Triumph model or to any other manufacturer's motorcycle. Fitting this accessory kit to any other Triumph model or to any other manufacturer's motorcycle, may interfere with the rider and could affect the stability and handling of the motorcycle leading to loss of control and an accident.

Warning

Always have Triumph approved parts, accessories and conversions fitted by a trained technician of an authorised Triumph dealer. The fitment of parts, accessories and conversions by a technician who is not of an authorised Triumph dealer may affect the handling, stability or other aspects of the motorcycles operation which may result in loss of motorcycle control and an accident.



T0050a

Parts Supplied:

- | | | | |
|---------------------------------------|--------------|---|--------------|
| 1. Alarm/Immobiliser | 1 off | 3. Bungee strap | 1 off |
| 2. Fixing kit | 1 off | 4. Fitting instructions. | 1 off |

Warning

Throughout this operation, ensure that the motorcycle is stabilised and adequately supported on a paddock stand to prevent risk of injury from the motorcycle falling.

NOTE

- A suitable heat gun and a hand-held power drill fitted with a 2mm diameter drill bit are required to fit this kit. A length of electrical wire is also required to fit the rubber strap to the battery box.

NOTE

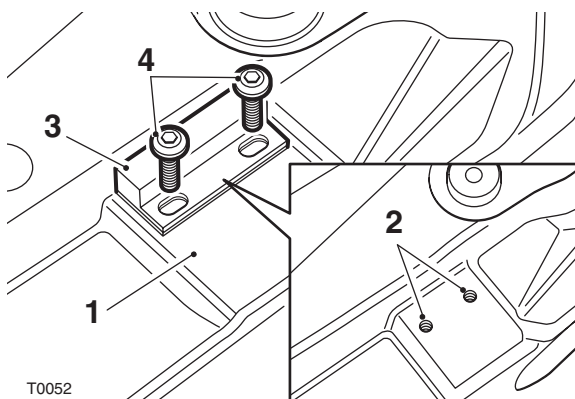
- Record the serial number and tag number from the underside of the alarm unit on to the alarm installation certificate.

Trigger Switch Fitment

1. Remove the seat and disconnect the battery, negative (black) lead first.
2. Undo the battery strap and remove the battery.
3. Place the seat on a clean non-abrasive surface and note the position of the two fixing holes shown. Secure the reed-switch magnet from the fitting kit to the fixing holes with the two screws supplied.

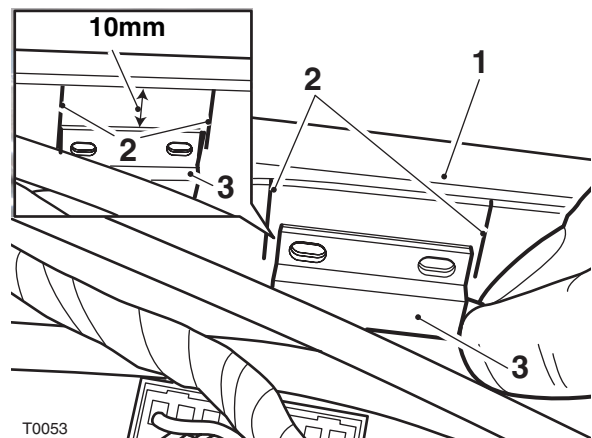
NOTE

- The fixing holes are pre-formed and do not require drilling.
- Ensure that the magnet is fitted in the orientation shown below.



1. Seat
2. Fixing holes
3. Reed-switch magnet
4. Screw fixing

4. Position the reed-switch between the two moulded lines on the left hand side of the battery box area. The top of the reed-switch should be 10mm from the top of the battery box.



1. Frame
2. Moulded lines
3. Reed-switch

Caution

Only drill through the plastic moulding. Do not drill into any part of the motorcycle frame or wiring. This would result in serious damage to the frame and wiring and a malfunction in the electrical system of the motorcycle.

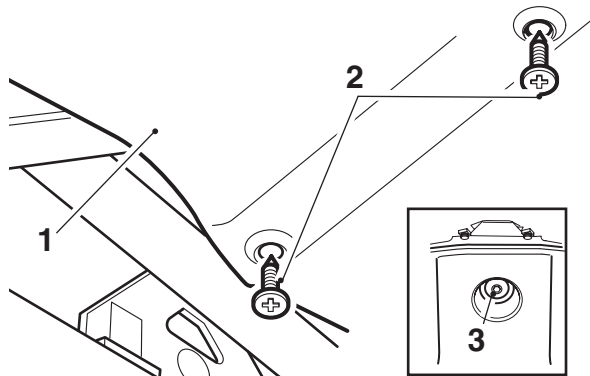
5. Mark the position of the reed-switch fixing holes, remove the reed-switch and drill a hole in each marked position using a 2mm diameter drill.

NOTE

- **Read the warning notices printed on the cleaning wipe packet in the fitting kit.**
 - **The surface to which the reed-switch is affixed must be clean and dry to ensure that the adhesive has a sound base to adhere to. Use the cleaning wipe supplied for this purpose.**
6. Peel off the backing strip from the adhesive pad on the reed-switch. Place the reed-switch in position and secure using the screws supplied.

Alarm Unit Fitment

1. Remove the undertray moulding, located beneath the battery box and alarm compartment, to gain access to the underside of the alarm compartment. Retain the undertray moulding and fixings for reuse.



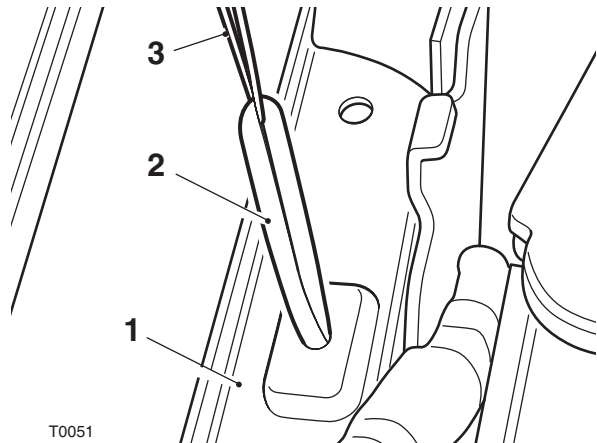
1. Undertray moulding
2. Fixing, front
3. Fixing, rear

2. Recover the bungee strap from the fitting kit and insert into the hole in the accessory alarm compartment.

Suggested method:

- Insert a length of spare electrical cable through the loop in the bungee.
- Feed both ends of the cable through the hole in the accessory alarm compartment, from the underside.

- Pull the bungee through the hole with the cable until the shoulder of the bungee abuts the underside of the accessory alarm compartment.
- Remove the electrical cable.



T0051

1. Accessory alarm compartment
2. Bungee strap
3. Electrical cable (for fitment of bungee only)

3. Refit the moulding undertray and secure with the original fixings. Tighten the front fixings with a suitable screwdriver and tighten the rear fixing to **3Nm**.

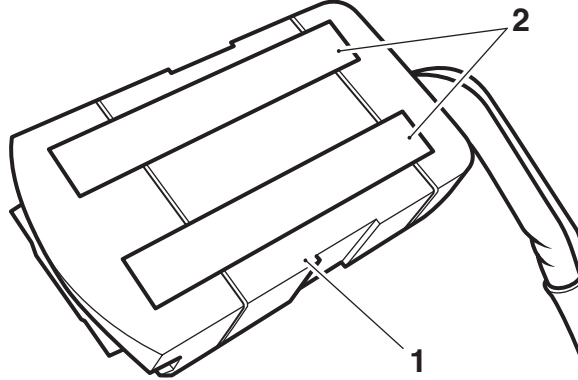
NOTE

- **Read the warning notices printed on the cleaning wipe packet in the fitting kit.**
- **The surface to which the foam pads are affixed must be clean and dry to ensure that the adhesive has a sound base to adhere to. Use the cleaning wipe supplied for this purpose.**

NOTE

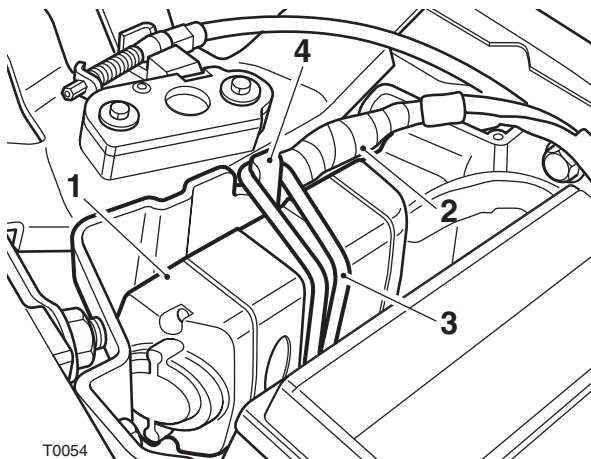
- **Locate the serial number on the base of the alarm unit and record for future use.**

4. Recover the two self adhesive foam pads from the fitting kit, peel off the backing strip from the pads and affix to the bottom of the alarm/immobiliser unit as shown.



1. Alarm/immobiliser unit
2. Foam pads

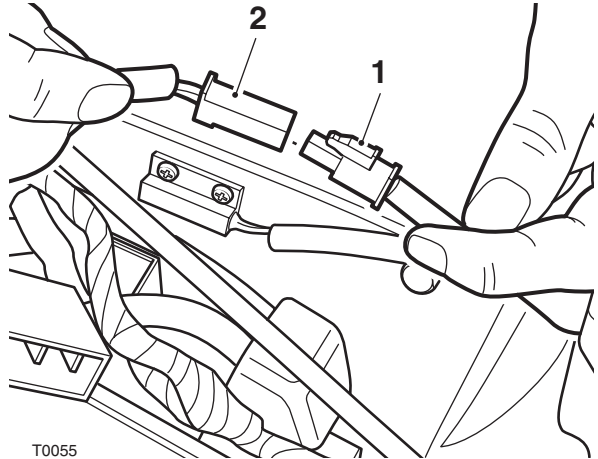
5. Insert the alarm/immobiliser unit into the accessory alarm compartment (foam pads towards the rear of the alarm compartment). Stretch the rubber bungee over the unit and loop the end over the hook moulded into the side of the compartment.



1. Alarm/immobiliser unit
2. Alarm/immobiliser wiring
3. Rubber bungee
4. Hook location

6. Refit the battery and secure with the battery strap.

7. Reconnect the battery, positive (red) lead first.
8. Connect the reed-switch wiring to the alarm/immobiliser wiring.



T0055

1. Reed-switch wiring connector
2. Alarm/immobiliser wiring connector

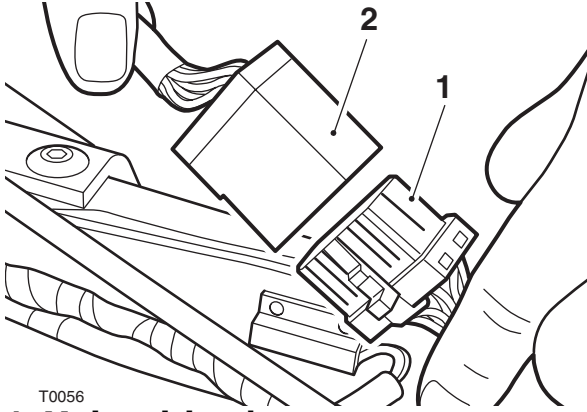
9. Locate the black, twelve pin connector on the main wiring harness and remove the connector shorting plug.

NOTE

- The alarm connector is an unused black coloured terminal block. The shorting plug is the cover for this terminal block which is fitted with a double hoop of black cable.
- The shorting plug must be returned to DATATOOL along with the registration documentation.

10. Slide the supplied heat shrink tubing over the alarm/immobiliser connector. **Do not shrink the tubing at this time.**

11. Connect the alarm/immobiliser wiring to the main wiring harness connector.



1. Main wiring harness connector
2. Alarm/immobiliser connector

12. Replace the motorcycle seat and check all the functions of the alarm as detailed in the user guide.

NOTE

- **When satisfied that the alarm/immobiliser is functioning correctly, the connection between the alarm/immobiliser unit and the main wiring harness must be made secure and tamper proof with the heat shrink tubing.**
13. Remove the seat, disconnect the battery, negative (black) lead first and remove the battery from the motorcycle.

Warning

To prevent the risk of the battery exploding and to prevent damage to electrical components ensure that the battery is removed from the motorcycle prior to the use of the heat gun.

Failure to observe the above warnings may lead to electrical damage and a fire hazard which could cause personal injury.

Warning

The air from a heat gun and the heat gun itself are very hot. Wear suitable protective gloves and do not point the heat gun at any part of your body as serious burns to the skin may result.

Caution

When fitting the heat shrink tubing, take care not to burn any part of the wiring harness or serious damage will result to the cable. Excessive heat will also cause the tubing to become brittle, rendering it useless.

14. Using a heat gun, shrink the tubing to secure the connection.

NOTE

- **If required use cable ties to secure both ends of the heat shrink tubing.**
15. Route the alarm/immobiliser wiring tidily and secure with the supplied cable ties.
 16. Refit and reconnect the battery, positive (red) lead first.
 17. Refit the seat.



Alarm contents list

Alarm unit 1 off
Transmitter 2 off
S4 user guide 1 off
Quick reference guide 1 off
Certificate of installation 1 off

Fitting kit contents list

Adhesive backed reed-switch . . . 1 off
Adhesive backed magnet 1 off
3mm self tapping screws 4 off
Adhesive backed foam pads 2 off
Cable ties 5 off
Isopropanol wipe 1 off
Heat shrink tubing 1 off
Lanyard 1 off
Application chart 1 off
Set of key blade conversion fillets 1 off

NOTE

- It is a Thatcham requirement that the MIRRC evaluation number is also shown on the certificate of the installation supplied to the customer. This evaluation number varies from Triumph model to model, dependent upon the fitting kit used.
- Write the relevant MIRRC evaluation number as indicated below onto the certificate of the installation, next to the alarm serial number.

| Triumph kit part number | Model | MIRRC evaluation number |
|--------------------------------|----------------------|--------------------------------|
| A9808083 | Street Triple | TMC1-287/0407 |